

# Manchester Opioid Crisis Summary

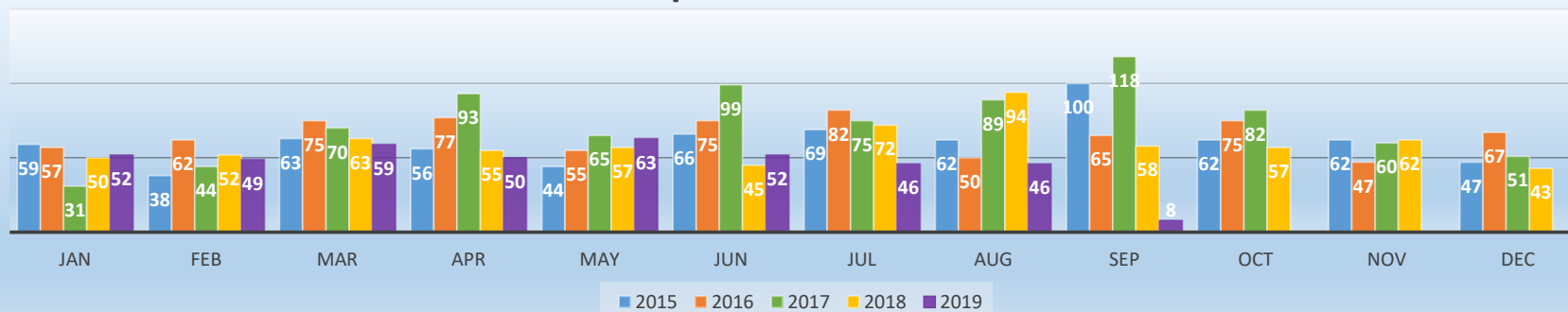
Change in Past 365 Days Compared to Previous 365 Days

-20% Decrease in Total Overdoses

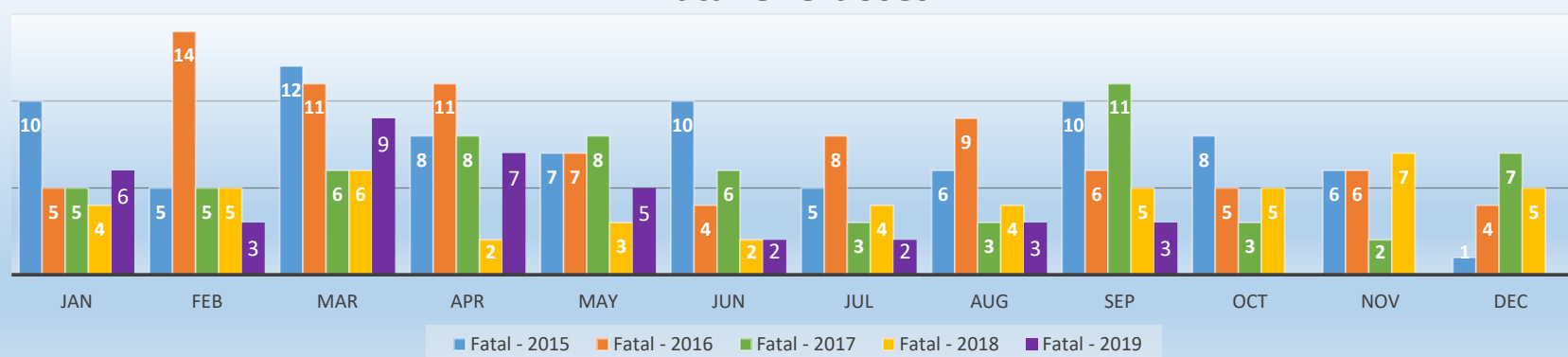
19% Increase in Fatal Overdoses (Includes Pending)

2015	2016	2017	2018	2019	All Years
Total ODs 728	Total ODs 787	Total ODs 877	Total ODs 706	Total ODs 424	Total ODs 3522
Fatalities 88	Fatalities 90	Fatalities 67	Fatalities 52	Fatalities 40	Fatalities 337
Pending 0	Pending 0	Pending 0	Pending 0	Pending 0	Pending 0
Fatality % 12%	Fatality % 11%	Fatality % 8%	Fatality % 7%	Fatality % 9%	Fatality % 10%
Narcan (mg) 1650	Narcan (mg) 2378	Narcan (mg) 2745	Narcan (mg) 2107	Narcan (mg) 1304	Narcan (mg) 10183

## Suspected Overdoses

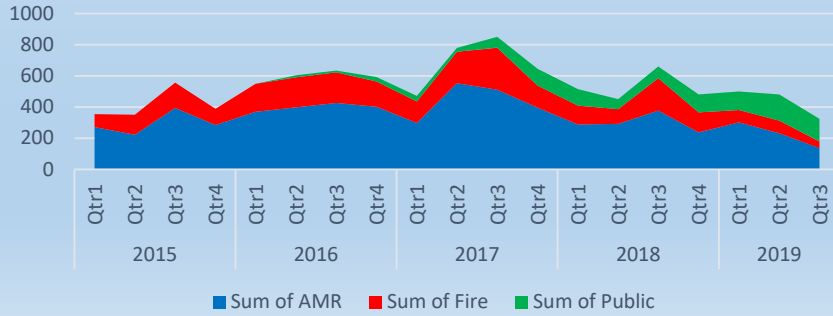


## Fatal Overdoses

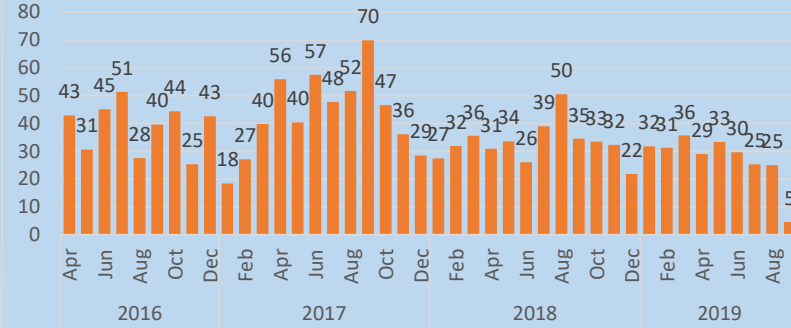


Data as of 9/6/2019

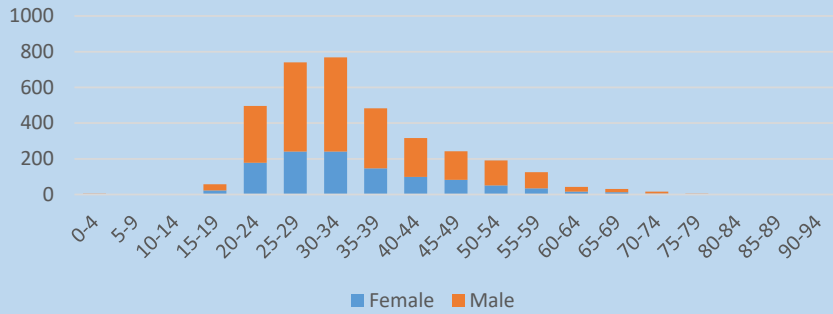
### Milligrams of Narcan by Source



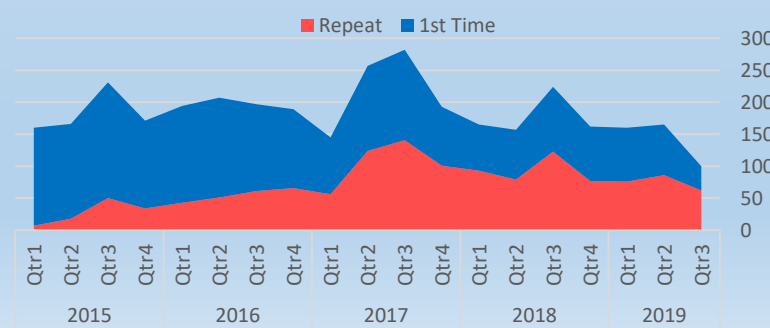
### Committed Ambulance Unit Hours



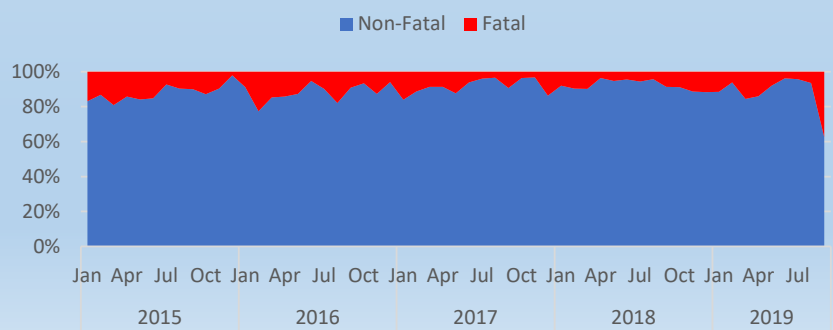
### OD - Age / Gender



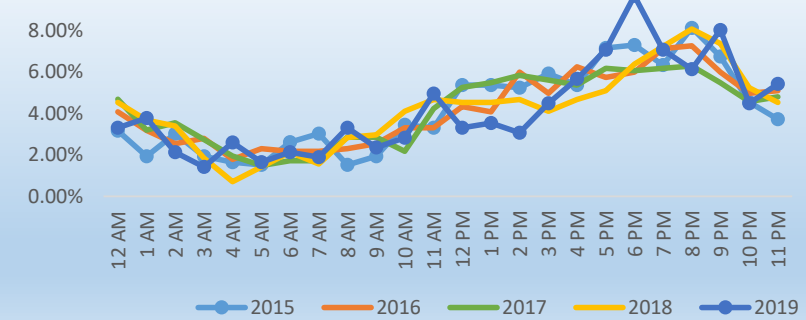
### OD - 1st Time Patient vs Repeat



### Percentage of Fatal Overdoses



### % of Overdoses by Time of Day





Manchester Opioid Crisis Summary

Line	SafeStation Statistics as of 07/31/2019	2016	2017	Q1 2018	Q2 2018	Q3 2018	Q4 2018	Q1 2019	Q2 2019	Q3 2019	Overall
		1	Number of Walk-In Requests for Safe Station:	976	1945	411	347	565	596	541	474
2	Average SafeStation Contacts Per Day	4.07	5.33	4.57	3.81	6.14	6.48	6.01	5.21	2.33	4.93
3	Number of Participants Taken to Substance Misuse Treatment Facility:	892	1393	274	261	411	473	424	345	125	4,598
4	Number of Participants Taken to a Hospital Emergency Department:	80	544	136	84	154	122	102	120	23	1,365
5	CMC	69	265	46	40	72	57	45	53	11	658
6	ELLIOT	11	279	90	44	82	65	57	67	12	707
7	Percent of Participant Requiring Transport to Hospital ED:	8%	28%	33%	24%	27%	20%	19%	25%	15%	23%
8	Average Number of Minutes AMR / Fire Companies "Not Available":	18.4	15.6	13.6	14.7	12.2	11.7	10.4	12.4	12.7	14.4
9	Number of UNIQUE Participants to Manchester SafeStation:	725	344	344	303	464	488	440	387	145	3481
10	Number of Repeat Participant visits to SafeStation:	252	872	194	162	290	316	297	278	69	2,730
11	Gender Breakdown										
12	Male	664	1413	292	258	384	439	393	334	112	4,289
12	Female	312	532	119	89	181	157	148	140	45	1,723
13	Number of Unique Participants Seen in both City's SafeStation Program:										516
14	Number of Unique Manchester Participants Who Overdosed Prior to Entry into SafeStation:										631
15	Number of Unique Manchester Participants Who Overdosed After Entry SafeStation:										299
16	Total Number of Manchester Participant Overdoses Prior to Entry into SafeStation:										1,024
17	Total Number of Manchester Participant Overdoses After Entry SafeStation:										601
18	Number of Fatal Overdoses after Patient Entered Manchester SafeStation:										29
<b>Station Summary</b>											
19	Central Station	806	1628	316	263	431	468	404	372	125	4,813
20	Station 2	23	47	22	13	24	24	22	12	4	191
21	Station 3	22	34	12	9	24	13	13	6	4	137
22	Station 4	8	4	3	2	1	4	2	1	4	29
23	Station 5	24	55	12	14	17	22	29	9	4	186
24	Station 6	33	66	16	24	23	20	25	15	6	228
25	Station 7	16	31	11	7	19	19	25	28	7	163
26	Station 8	7	13	3	0	6	2	1	7	0	39
27	Station 9	8	10	2	5	5	3	2	6	1	42
28	Station 10	29	57	14	10	15	21	18	18	2	184

Data as of 9/6/2019



Manchester Opioid Crisis Summary

Communities Served By The Manchester SafeStation Program

Community	Count	Community	Count	Community	Count	Community	Count
MANCHESTER, NH	2620	TILTON, NH	24	PETERBOROUGH, NH	12	NEW HAMPTON, NH	7
Nashua, NH	349	PLYMOUTH, NH	23	FREMONT, NH	11	LANCASTER, NH	6
ROCHESTER, NH	196	LITTLETON, NH	22	EPSOM, NH	11	BRATTLEBORO, VT	6
CONCORD, NH	183	NORTHFIELD, NH	22	SALISBURY, MA	11	SANDOWN, NH	6
LACONIA, NH	164	EXETER, NH	21	HAVERHILL, MA	11	HILL, NH	6
DERRY, NH	128	AUBURN, NH	20	BARRINGTON, NH	10	EFFINGHAM, NH	6
FRANKLIN, NH	107	EPPING, NH	20	DUNBARTON, NH	10	DANVILLE, NH	6
DOVER, NH	87	LAWRENCE, MA	19	NORTH CONWAY, NH	10	RUMNEY, NH	6
SALEM, NH	78	LITCHFIELD, NH	19	BOSCAWEN, NH	10	ASHLAND, NH	6
GOFFSTOWN, NH	64	MEREDITH, NH	18	PITTSFIELD, NH	10	GROVETON, NH	6
LONDONDERRY, NH	58	CLAREMONT, NH	17	BOW, NH	9	NEWMARKET, NH	6
RAYMOND, NH	51	DEERFIELD, NH	17	CANTERBURY, NH	9	WILTON, NH	6
BEDFORD, NH	46	NEW BOSTON, NH	17	MYRTLE BEACH, SC	9	YARMOUTH, MA	5
SEABROOK, NH	45	ALEXANDRIA, NH	17	STRAFFORD, NH	8	EAST KINGSTON, NH	5
MILFORD, NH	43	HAMPTON, NH	16	KINGSTON, NH	8	MADBURY, NH	5
HOOKSETT, NH	42	GILFORD, NH	16	Greenville, NH	8	JAFFREY, NH	5
HUDSON, NH	40	BRISTOL, NH	16	Gilmanton, NH	8	HANCOCK, NH	5
OSSIPEE, NH	38	LEBANON, NH	15	ATKINSON, NH	8	WORCESTER, MA	5
FARMINGTON, NH	35	PLAISTOW, NH	15	WINDHAM, NH	8	NEWTON, NH	5
SOMERSWORTH, NH	34	BARNSTEAD, NH	15	NORTHWOOD, NH	8	DUBLIN, NH	5
WEARE, NH	34	LYNN, MA	15	HAMPSTEAD, NH	8	THORNTON, NH	5
BERLIN, NH	34	WOLFEBORO, NH	15	PELHAM, NH	8	OSSIPPEE, NH	5
KEENE, NH	34	HILLSBORO, NH	14	ANTRIM, NH	7	NEW LONDON, NH	5
MERRIMACK, NH	33	LOUDON, NH	13	NEW DURHAM, NH	7	NEW IPSWICH, MA	5
BOSTON, MA	32	MILTON, NH	13	COLEBROOK, NH	7	BRIDGEWATER, NH	4
PORTSMOUTH, NH	31	CONWAY, NH	12	HARTFORD, CT	7	TEMPLE, NH	4
BELMONT, NH	31	WAKEFIELD, NH	12	PORTLAND, ME	7	Newport, NH	4
ALLENSTOWN, NH	30	CANDIA, NH	12	HOLLIS, NH	7	BENNINGTON, NH	4
LOWELL, MA	26	HENNIKER, NH	12	SANFORD, ME	7	WILMINGTON, MA	4
PEMBROKE, NH	24	ALTON, NH	12	Chester, NH	7	METHUEN, MA	4

Data as of 9/6/2019